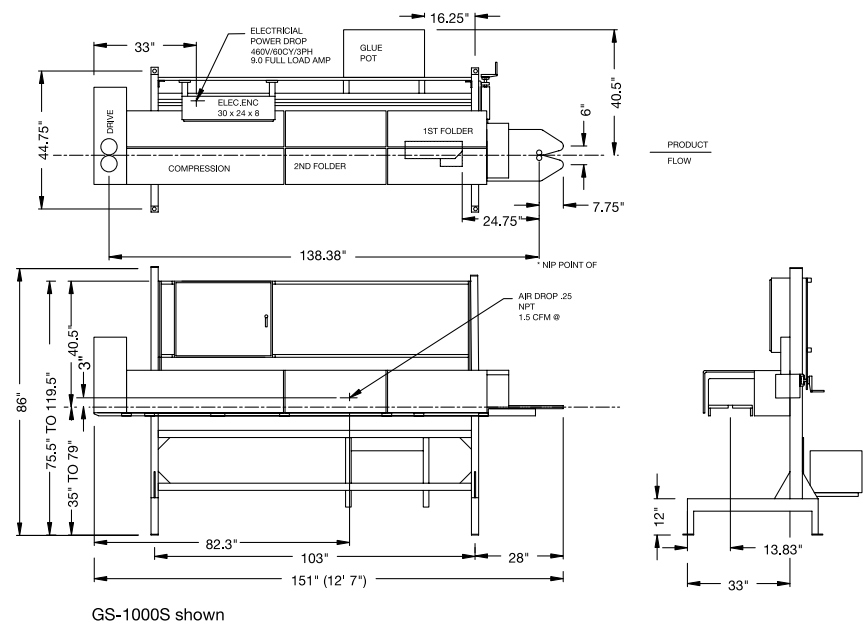


Technical Data

	GS-1000S	GS-1000	GS-1000XL
Length	151"	192"	245"
Width	44.75"	44.75"	44.75"
Height	86"	86"	86"
Height Range	35-79"	35-79"	35-79"
Speed	Up to 100' / min	Up to 60' / min	Up to 75' / min
Glue Type	Hot melt	Hot or Cold	Hot melt
Electrical	440-220 / 60 / 3	440-220 / 60 / 3	440-220 / 60 / 3
Glue Applicator	Nordson or Valco, others upon request		

GS-1000S Mechanical Dimensions



GS-1000S shown

Bosch Packaging Technology, Inc.
Packaging Machines

869 South Knowles Avenue
New Richmond, WI 54017 USA
Phone (715) 246-6511
Fax (715) 246-6539
sales.packaging-nrd@bosch.com
www.boschpackaging.com

Product Specifications

Products outside these limits may be packaged with machine modifications.

- Bag Size 3 – 20 lbs.
- Bag Style Gussetted / Multi-wall / Inner Liner Seal (GS-1000XL)
- Bag Width Min. 3.5" to 15"

Parts and Service Dependability

Over 30,000 different Bosch parts are in stock at all times. A computerized inventory control system assures immediate response, while professional Bosch service technicians provide nationwide service, including installations, training, maintenance, and in-plant repairs. Find the nearest Bosch representative at www.boschpackaging.com

Printed in U.S.A.



GS-1000™ Series Double Fold Glue Sealer
High-Speed Bag Gluer for Continuous
Flow-Through Operation

Doboy



Double Fold Glue Sealer for High-Speed Production

Key to the performance of the GS-1000™ Series Glue Sealer is the patented jam-proof folder mechanism, which produces a sharp, crisp fold on bag tops. The unique design allows unevenly fed or damaged bags to pass through the machine without jamming. The GS-1000 Series is designed for durability to provide high-speed, 3-shift / day operation.

Outstanding Features

Sharp, Crisp Folds

Patented folders provide precision fold quality for straight and even folds. The folder is spring-loaded and fully adjustable. The folder hinges open for maintenance and bag adjustment. Designed for heavy duty operation, the folder is constructed of polished plate steel.

Consumer Friendly Closure

Two 3/4" folds provide a strong, sift-proof closure that is easy for the end user to open.

Rotary Trimmer

Rotary trimmer cast housing provides precision alignment. The trimmer is equipped with special twin blades for consistent bag top trimming.

Hot Melt or Cold Glue Unit

Choice of hot melt for high speed applications or a pressurized cold glue extrusion system for secure seals at lower speeds. Includes micro-adjustable glue gun mount for accurate adhesive placement.

Creasers

Prior to each fold, the creasers score the bag to assist in the folding process.

Heat Seal Bars

Available on GS-1000 and GS-1000XL, cast iron heat bars provide inner bag liner seal.

Dual Axis Glue Gun Mount

Allows precise adjustment of hot melt, which is critical to maintain accurate glue bead placement.

Compression Section

The compression section is adjustable for varying bag thickness. Consistent pressure is applied to the fold for a strong secure seal. Speeds up to 100 feet per minute can be achieved.

Smooth Continuous Feeding

A line shaft runs the entire length to drive trimmers and creasers. Sealed roller bearings provide smooth operation for long life and low maintenance.

Bag Top Carrier Chains

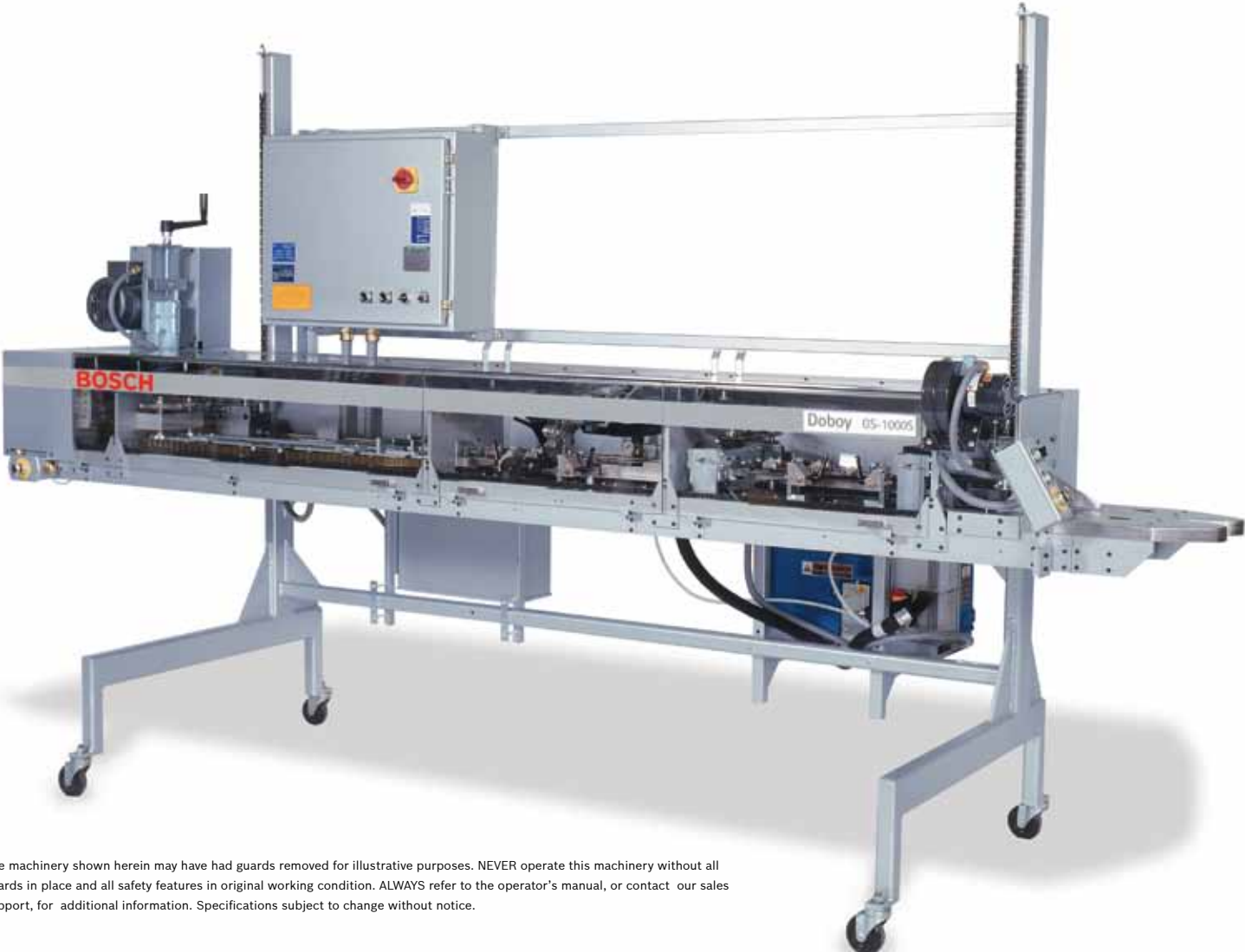
Special flat face chains grip the bag for firm, positive control throughout the folding and compression sequence.

Variable Speed Drive

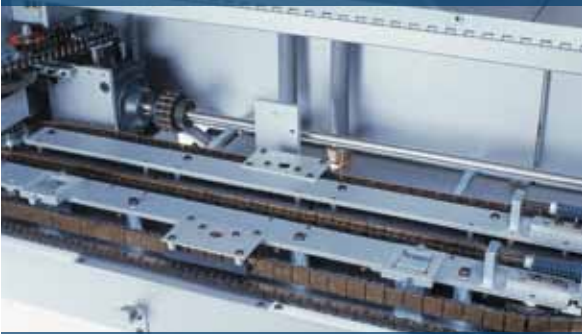
Allows speed adjustment up to 100 inches per minute. VFD drives available as an option.

Three Models Available

- ▶ The GS-1000 for cold glue application or lower speed heat sealing.
- ▶ GS-1000S for hot melt application.
- ▶ GS-1000XL for high speed applications where inner liner heat seals are required.



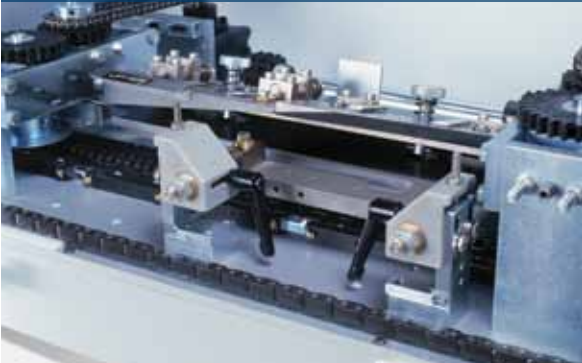
The machinery shown herein may have had guards removed for illustrative purposes. NEVER operate this machinery without all guards in place and all safety features in original working condition. ALWAYS refer to the operator's manual, or contact our sales support, for additional information. Specifications subject to change without notice.



GS-1000S Compression Section



GS-1000S Trimmer and Infeed



GS-1000S Folder Section