

## Intermittent Pick 'n Place®

### FEATURES AND BENEFITS

- Only feeder on the market with vertical or horizontal placement
- Simple design translates to an easy installation.
- Clean, logical control panel design makes the machine easy to operate.
- Standard construction incorporates a sanitary design suitable for most bakery or pharmaceutical installations. Washdown construction available.
- Standard air cylinder drive offers a virtually maintenance free motion control and drive system.
- Smooth pivot rod motion creates a steady placement, especially at higher speeds.
- Pivot rod motion control enhances machine versatility, allowing for the possibility of the unit to be utilized in future tasks.
- Quick and easy product changeover means less downtime and greater machine efficiency.
- Many options available, allowing the end user to customize the machine to their specific needs
- Materials typically handled include; multi-fold coupons, plastic plates, labels, plastic trays, corrugated, styrofoam trays, parchment paper, foil trays, glassine, paperboard trays, card stock, packets, single sheet paper stock.

# Intermittent Pick 'n Place

## Typical Utility Requirements

- ELECTRICAL: 115 VAC 10 Amps Max (with optional 1/3 Hp Gast pump)
- AIR: 80 PSI Filter and Regulator Provided
- VACUUM: Up To 10 SCFM At 20" HG (if optional pump is not purchased)

## Maximum Speeds

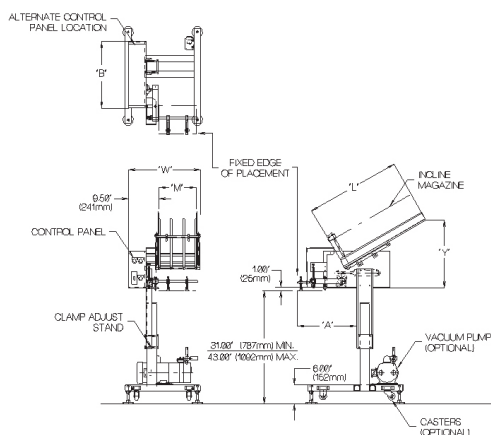
- 100 Cycles Per Minute Vertical Placement Mode
- 70 Cycles Per Minute Horizontal Placement Mode

## Product Size Range

- Minimum: 1" (26mm) x 1" (26mm)
- Height: 6" (152mm), 9" (229mm), 12" (305mm), and 15" (381mm) high magazines are available.
- Width: 7" (178mm) and 12" (305mm) wide magazines are available. The maximum product height is the same.

## Maximum Heights By Model:

- IPP-170: 9" (229mm)
- IPP-190: 12" (305mm)
- IPP-1110: 15" (381mm)



## Options Available

- Machine Orientation
- Vertical Placement Mode
- Denesting Motion
- 16, 30, or 48" Long Magazine
- Oscillating Rod Magazine
- Quick Change Magazine
- Gast Vacuum Pump
- Venturi Vacuum System
- Floor Stand
- Screw Height Adjustment
- Adhesive System
- 7" (178mm) or 12" (305mm) Wide Machine
- Photoelectric Cycle Control
- Plexiglass Front Guard
- Missed Detection System with or without Buzzer
- Kwik Klip™ Assembly
- Parallel Jackshaft Drive
- Auto Recycle if an Item is Missed
- Right Angle Gearbox Drive
- Casters
- No Tool Magazine Changeover

MODEL	A	B
IPP-170	14.75" (375 mm)	24.50" (622 mm)
IPP-190	18.75" (476 mm)	26.50" (673 mm)
IPP-1110	22.75" (578 mm)	28.50" (724 mm)

WIDTH		LENGTH	
M	W	L	Y
7"	17.75" (450 mm)	16.25" (413 mm)	18" (457 mm)
		30" (762 mm)	25" (635 mm)
12"	22.75" (578 mm)	48" (1219 mm)	34" (864 mm)

## MGS

9900 85<sup>th</sup> Ave North, Maple Grove, MN 55369 USA  
 T (800) 790-0627  
 www.mgsmachine.com

