

INFORMATION CONTAINED IN THIS DRAWING IS PROPRIETARY TO PRIORITY ONE PACKAGING LTD. AND SHALL NOT BE DISCLOSED TO ANYONE OTHER THAN PERSONS AUTHORIZED BY THE COMPANY TO WHOM PRIORITY ONE PACKAGING LTD. HAS FURNISHED THIS DRAWING.

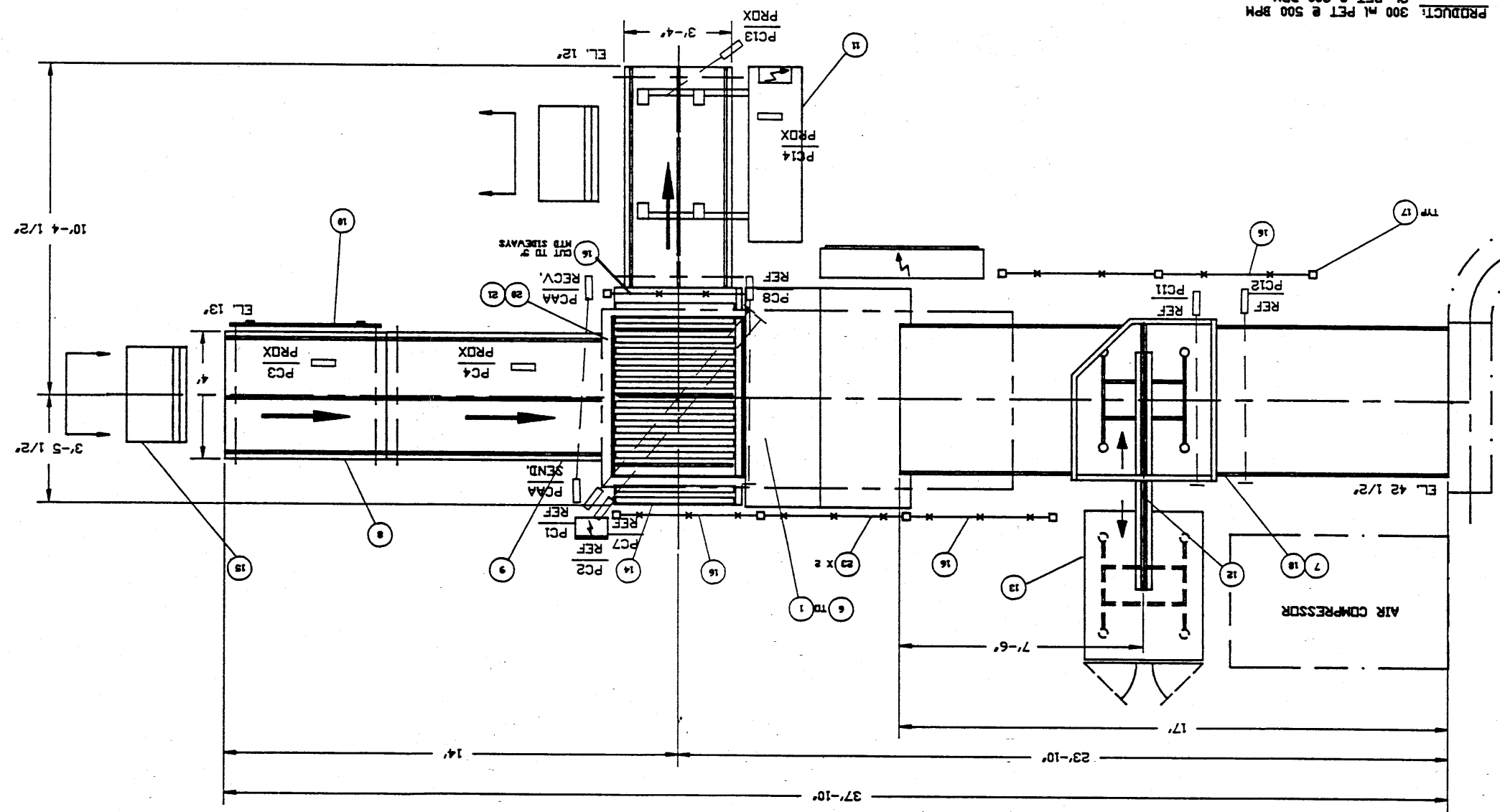
SOLENOID	
SLIDING TABLE (N/DUT)	1 DBL ACTING
CARRIAGE FLAPS (OPEN/CLOSE)	1 DBL ACTING
PALMAG GRIPPER	1
POP-UP	1 DBL ACTING
TIER SHEET VACUUM	1
TIER SHEET (FWD/REV)	1 DBL ACTING
TIER SHEET (UP/DOWN)	1
MOTOR	
PALLET CONVR	1/2 HP 39 RPM R40D71D4Z
LIFT DRIVE	5 HP 54 RPM KA7C01100L48M
POP-UP CHAIN	1/2 HP 39 RPM SA42D71D4
ROLLER CONVR	1/2 HP 58 RPM R40D71D4
CARRIAGE DRIVE	1 HP 152 RPM R40D180N48M
PALLET STACKER	3/4 HP 85 RPM S62D180K48M
BOTTLE TABLE	1 HP 9-45 RPM SA42D14D180N4Z
POWER SUPPLY	3/60/575

PROX SENSORS	
PR1 LIFT SAFETY PIN #1	
PR2 LIFT SAFETY PIN #2	
PR3 CARRIAGE TILT SAFETY #1	
PR4 CARRIAGE TILT SAFETY #2	
PR5 CARRIAGE STOP PROX	
PR6 CARRIAGE AT DEPAL STATION	
PR7 CARRIAGE AT SLIDING TABLE	
PR8 CARRIAGE AT BOTTLE TABLE	
PR9 LIFT AT TOP OF TRAVEL	
PR10 LIFT AT BOTTOM OF TRAVEL	
PR11 LIFT AT BOTTLE TABLE(TOP)	
PR12 LIFT AT BOTTLE TABLE(BOTTOM)	
PR13 LIFT STOP PLUNGER	
PR14 SLIDING TABLE INTO BOTTLE TABLE	
PR19 TIER SHEET UP	
PR20 TIER SHEET OVER BOTTLE TABLE	
PR21 TIER SHEET OVER BIN	
PR22 PALMAG GRIPPER OPEN	
PR23 PALMAG UP	
PR24 PALMAG DOWN	

REVISIONS	
DATE	DESCRIPTION
04/01/92	GENERAL REVISIONS TO GLASEX
05/21/92	GENERAL REVISIONS
06/02/92	BOTTLE TABLE HEIGHT DETERMINED
07/08/92	INSTALLATION REVISIONS

REFERENCES	
DWG NO.	TITLE

PHOTO ELECTRICS  
PC1 PALLET IN DEPAL STATION  
PC2 PRODUCT ON PALLET IN DEPAL STATION  
PC3 PALLET ON INFEED CONVEYOR NO.1  
PC4 PALLET ON INFEED CONVEYOR NO.2  
PC7 PRODUCT STACK HEIGHT DETECTOR  
PC8 STACK LOCATION FOR SLIDING TABLE OUT  
PC11 BOTTLES AT TIER SHEET REMOVER  
PC12 BOTTLES CLEAR OF TIER SHEET REMOVER  
PC13 EMPTY PALLET IN PALMAG STATION  
PC14 PALMAG STATION FULL



TITLE: INSTALLATION LAYOUT GLASEX BULK DEPALLETIZER	
CUSTOMER: BIG 8 BEVERAGES, STELLARTON N.S.	
DRAWN: JOEL LEHMAN	
DATE: JULY 8/92	
SCALE: 1/2" = 1'	
DWG: CL-1951D	
REV. D	

QTY.	DESCRIPTION	ITEM	REMARKS
1	MAIN FRAME	206629	TO MAKE UP ONE GLASEX
1	ELEVATOR	206275	
1	ELEVATOR DRIVE	206631	
1	CARRIAGE	206283	
1	POSITIONER	206632	
1	SLIDING TABLE	206630	
1	BOTTLE TABLE	206636	
1	PALLET CONVR	206760	48" x 60" LONG
1	PALLET CONVR	206759	48" x 83" LONG
1	PALLET GUIDE	306722	
1	PALLET STACKER	206480	
1	TIER SHT. REMOVER	206591	
1	TIER SHT. BIN	206733	
1	90° POP-UP	206737	
2	TRUCK STOP	306576	
5	SCREEN	306582-1	4" WIDE
8	POST	306581-1	
1	GUIDE RAIL	401020	
1	PALLET CONVR	206814	40" x 83" LONG
1	FLAP SPACER	306763	
2	FLAP SPACER	306764	
1	PALLET STOP	306815	
2	SCREEN	306582-2	3" WIDE
6	REFLECTIVE PC	DMRDN	E3JM-R4M4-US
4	PROX PC	DMRDN	E3JM-70M4-US
1	SEND/RECV. PC	DMRDN	E3JM-10M4-US
18	PROX SWITCH	TURCK	IM5-CF40-F23X2
2	BARREL PROX	AB	AB-871T-G4B12