

REVISONS				
REV.	DESCRIPTION	REV BY	CHK BY	DATE
05	ADDED THE ELECTRICAL DROP 4 CALLOUT	WMN		4/5/2021

HAMER/FISCHBEIN  
HAND BAGGING LINE  
SPECIFICATIONS:

REFER TO THE ELECTRICAL SCHEMATICS FOR AMPS / FLA REQUIREMENTS.  
IF YOU REQUIRE A SCHEMATIC PRIOR TO YOUR EQUIPMENT ARRIVAL  
PLEASE CONTACT THE ELECTRICAL DEPARTMENT AT HAMER-FISCHBEIN.  
1-800-785-7011

#### UTILITIES:

● ELECTRICAL DROPS

#### 600NW GRAVITY SERVO FEED SCALE

ELECTRICAL DROP 1, 110 VAC, 1-PHASE, 60 HZ, 3 AMP (SCALE)  
ELECTRICAL DROP 2, 230 VAC, 1-PHASE, 60 HZ, 9 AMP(SERVO)

#### B2600 BAG CLOSER

ELECTRICAL DROP 3, 208 VAC, 3-PHASE, 60 HZ, 12.3 AMP MAX

#### CONVEYOR CONTROL PANEL

ELECTRICAL DROP 4, 208 VAC, 3-PHASE, 60 HZ, 18.3 FLA

#### ALL AIR INPUTS REQUIRE CLEAN DRY AIR

#### 600NW GRAVITY SERVO FEED SCALE

MINIMUM 3/4" AIR LINES REQUIRED

AIR DROP 1, MINIMUM 5 CFM CFM @ 80 PSI, 3/8" NPT

#### B2600 BAG CLOSER

NO AIR REQUIRED

#### BAG FLATTENER

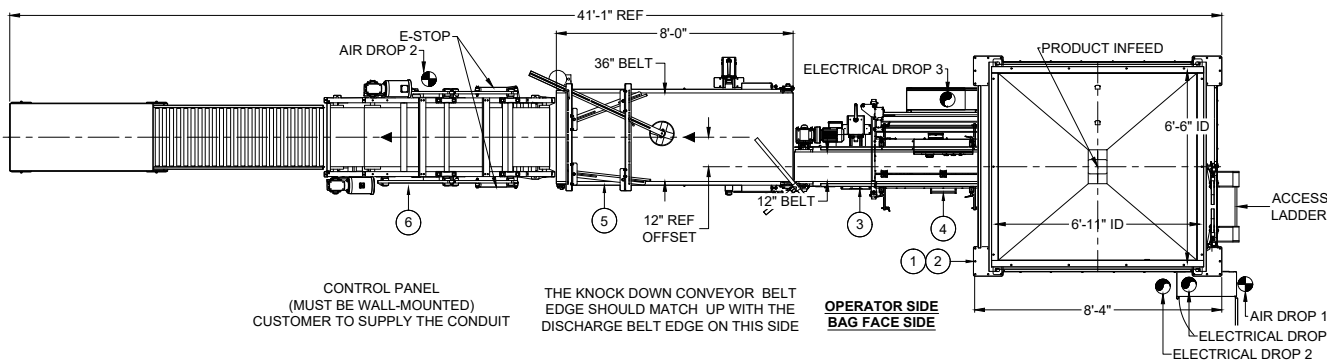
AIR DROP 2, MINIMUM 2 CFM @ 80 PSI MINIMUM, 1/2" NPT (NON-CONTINUOUS)

TO BE SUPPLIED BY CUSTOMER

#### ANCHOR BOLTS:

#### OPERATING TEMP:

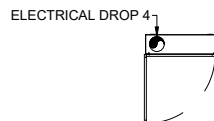
40° - 105° - F NON-CONDENSING HUMIDITY



CONTROL PANEL  
(MUST BE WALL-MOUNTED)  
CUSTOMER TO SUPPLY THE CONDUIT

THE KNOCK DOWN CONVEYOR BELT  
EDGE SHOULD MATCH UP WITH THE  
DISCHARGE BELT EDGE ON THIS SIDE

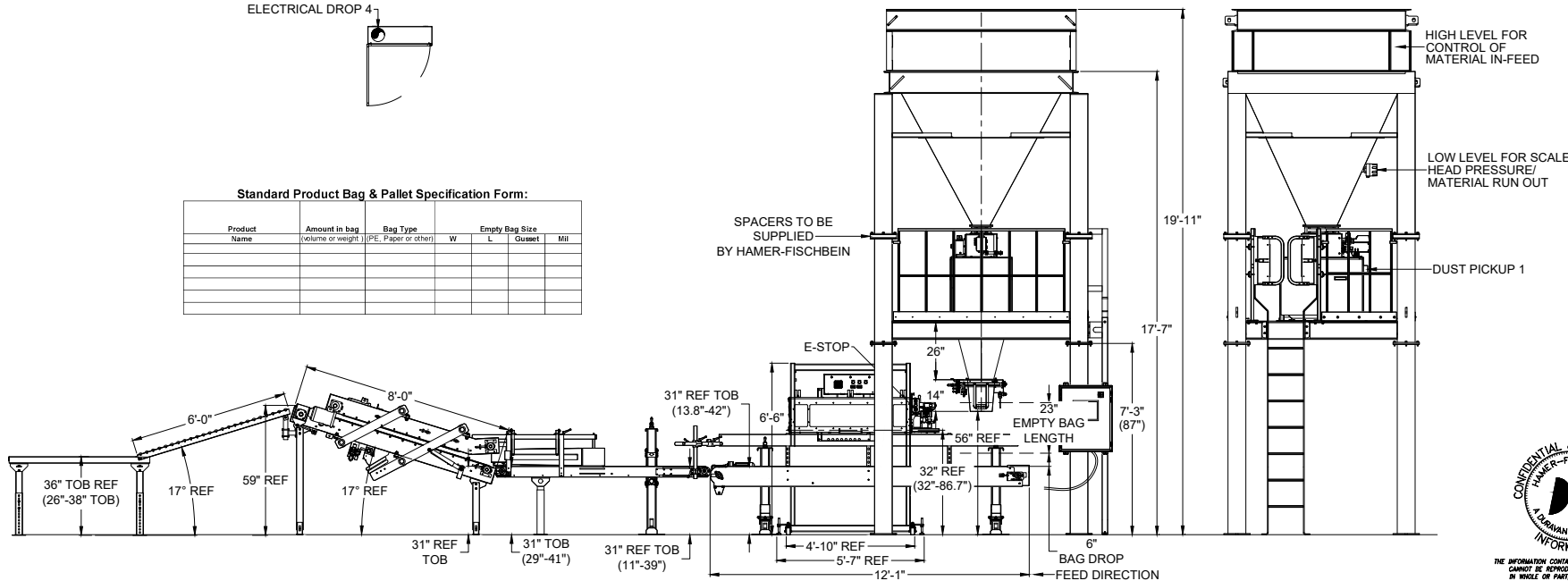
OPERATOR SIDE  
BAG FACE SIDE



Standard Product Bag & Pallet Specification Form:

Product Name	Amount in bag (volume or weight)	Bag Type (PE, Paper or other)	Empty Bag Size W	L	Count	Mil

SPACERS TO BE  
SUPPLIED  
BY HAMER-FISCHBEIN



#### NOTES:

1) ALL AIR INPUTS REQUIRE CLEAN DRY AIR.

2) MACHINE SHOULD BE LOCATED WITH A MINIMUM OF 3 FT. CLEARANCE ON ALL FOUR SIDES.

3) CONVEYOR TOB (TOP OF BELT) HEIGHTS CHANGE ACCORDING TO BAG SIZE. SOME ADJUSTMENTS MAY BE REQUIRED.

4) BAG RAIL HEIGHTS CHANGE ACCORDING TO BAG SIZE.

SOME ADJUSTMENTS MAY BE REQUIRED

5) BALLOON CALLOUTS MATCH THE QUOTE & THE TAGS ON SHIPPED CONVEYORS.

● AIR DROPS

● ELECTRICAL DROPS

6) IN ACCORDANCE WITH LOCAL, COUNTY, STATE OR FEDERAL FIRE SAFETY CODES, THE CUSTOMER MAY BE RESPONSIBLE FOR THE INSTALLATION OF A FIRE SUPPRESSION/SPRINKLER SYSTEM UNDER THE SCALE PLATFORM. PLATFORM DIMENSIONS SHOWN ARE FOR GENERAL REFERENCE ONLY.

7) IN ACCORDANCE WITH LOCAL SAFETY REQUIREMENTS PERSONS SERVICING EQUIPMENT OVER 4 FEET ARE REQUIRED TO WEAR A FALL PREVENTION HARNESS, SAFE TIE OFF POINT NEEDS TO BE SUPPLIED BY OTHERS.

8) THERE MUST BE A MINIMUM DISTANCE OF 18\"/>

*Lucy Macri*

CLEAN/DRY AIR REQUIRED  
AS NOTED YOUR NEW EQUIPMENT  
REQUIRES CLEAN/DRY AIR TO MEET  
OPERATIONAL OBJECTIVE

#### CUSTOMER APPROVAL

APPROVED AS NOTED ☐

NOT APPROVED ☐

NAME \_\_\_\_\_ DATE \_\_\_\_\_

SIGNATURE \_\_\_\_\_

COMPANY \_\_\_\_\_

CUSTOMER COPY

RETURN TO HAMER-FISCHBEIN, LLC

DELAYS IN RETURNING THE APPROVAL DRAWINGS MAY EFFECT YOUR TARGETED SHIP DATE.

HAMER-FISCHBEIN, LLC

14550 20th AVE. NORTH

PLYMOUTH, MN 55447

1-800-927-4074



THE INFORMATION CONTAINED IN THIS DOCUMENT  
CANNOT BE REPRODUCED OR DISSEMINATED  
IN WHOLE OR PART, WITHOUT SPECIFIC  
AUTHORIZATION FROM HAMER-FISCHBEIN, LLC



TITLE: 600NW SIMPEX SERVO GRAVITY, 600NW 100CUFT HD SUPPORT  
STRUCTURE WITH 600NW 100CUFT HD HOPPER EXTENSION  
B2600, 4000, 4200, 5100 WITH STACKING TABLE  
FOR: AMG SACRAMENTO - ATHENA PRODUCTS

SIZE	SCALE	DWG NO.	REV.
N/A	N/A	20_01_1003	05
DRAWN BY:	DATE	CHECKED BY:	SHEET
WMN	1/15/2021		1 of 1