

Standard Features

- **Heavy-Duty Design** – capable of 100 psi or higher form air pressure with minimal deflection; side-actuated toggles for long life and exceptional platen stability.
- **Versatile, Precise Controls** – standard with *Informer™* Series Process Control System.
- **PLC-Controlled Oven Zones** – individually controlled zones with thermocouple feedback; top and bottom quartz heating elements; space-saving clamshell design; available in a variety of lengths.
- **Rugged Sheet Conveying and Index Design** – sprocketless chain rails; water-flooded for enhanced process control; automatic tensioning of pin chain; adjustable hold-down bars; splined drive shaft for rapid width adjustment.

Options

- Quick-change tool package
- Plug heater control
- Servo chain rail adjustment
- Custom oven-zoning layouts
- Preheat ovens
- Top or bottom servo plug drive
- Servo shut-height adjustment
- Auto-load roll stand
- International voltages
- Clamp frame drive
- Servo-controlled valving
- Features for direct extrusion applications

Efficiency, speed and reliability in versatile continuous thermoformers.



FM SERIES

This line of versatile thermoformers offers high speed as well as economical and reliable performance for a variety of forming applications. Two moving platens (top and bottom) guided on precision linear bearings allow parts to be formed up or down as required, optimizing material distribution and part weight reduction.

The FM series features powerful and precise servo platen drives and is available in a wide range of sizes and configurations (see specifications). Additional or custom sizes, as well as deep-draw versions, also are available.

LEAD WITH LYLE

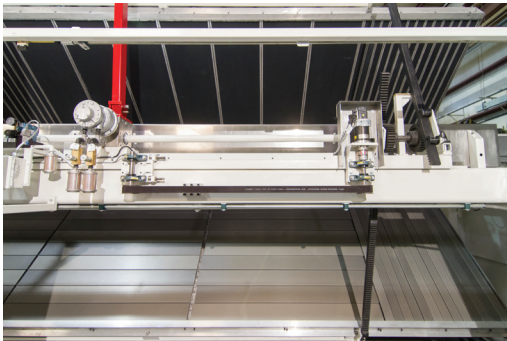
FM SERIES THERMOFORMER SPECIFICATIONS



	MODEL			
	130FM	140FM	152FM	165FM
Standard Mold Size (Width x Length)	30 x 36 inches 762 x 914 mm	40 x 42 inches 1016 x 1067 mm	52 x 56 inches 1321 x 1422 mm	65 x 70 inches 1651 x 1778 mm
Max. Full Stroke Dry Cycle Speed CPM	48	45	45	45
Platen Stroke (Top & Bottom)*	7 inches 178 mm	9 inches 229 mm	9 inches 229 mm	9 inches 229 mm
Form Pressure Rating	54 tons 48,988 kg	84 tons 76,204 kg	135 tons 122,470 kg	227 tons 205,931 kg
Sheet Width	33 inches 838 mm	43 inches 1092 mm	55 inches 1397 mm	68 inches 1727 mm
Oven Length 4 Index	144 inches 3658 mm	168 inches 4267 mm	224 inches 5690 mm	280 inches 7112 mm

*Also available: FMD Series with 12" stroke for deep-draw applications.

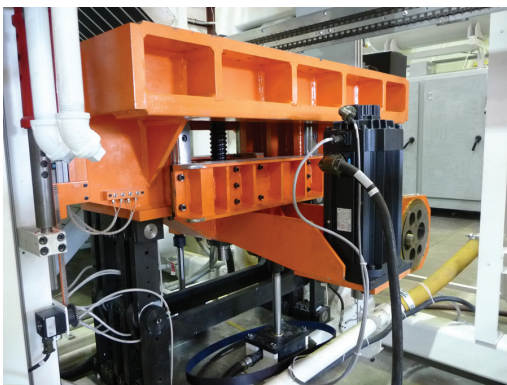
Note: Additional or custom sizes are available. Please contact your Lyle Industries representative. Guards may have been altered or removed for photographic purposes; in use, all guards must remain in place. Specifications subject to change without notice.



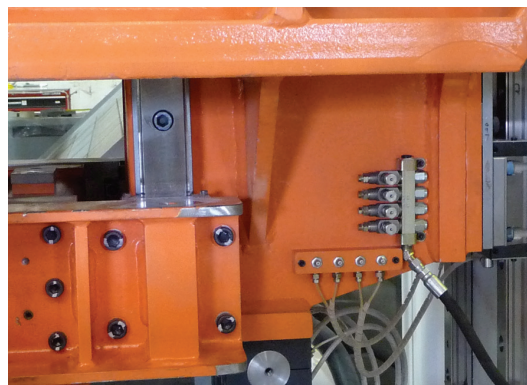
Standard oven configuration



Servo platen drive



Servo plug drive



Linear bearings

For more information, call 989-435-7717 or visit our website at www.lyleindustries.com.



Beaverton, MI 48612
www.lyleindustries.com