

*North Star*  
**MODEL 60 FLAKE ICE MAKER**  
**SPECIFICATION SHEET**

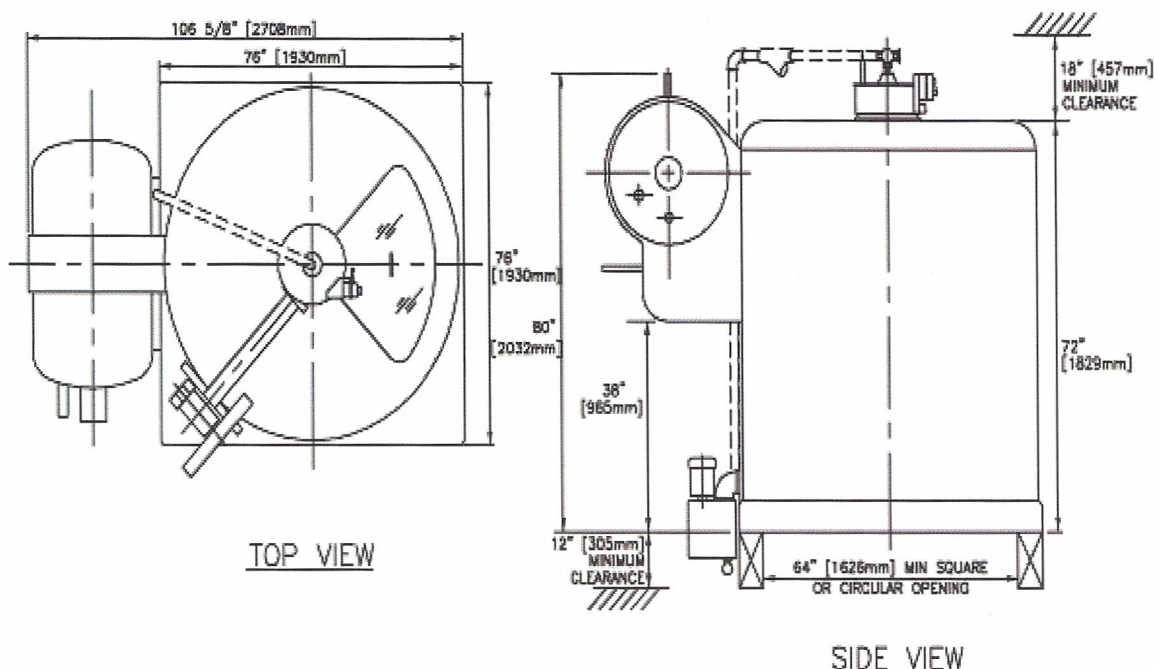


**STANDARD FEATURES**

- ◆ Double walled, stationary evaporator. No refrigerant seals to leak.
- ◆ Available with either a solid carbon or stainless steel freezing surface.
- ◆ Protection and safety features include mechanical load limit switch, emergency stop switch, jog switch, inspection hatch safety switch and a drive belt guard.
- ◆ Machine available for shipboard installation to produce seawater ice.
- ◆ Polyurethane insulation enclosed in molded fiberglass covers.
- ◆ Attached accumulator for complete gas- liquid refrigerant separation. (Flooded operation)
- ◆ Patented drip shield to insure complete water-ice separation.
- ◆ Stainless steel water make-up tank and ice removal tools are standard. Other stainless steel options are available.
- ◆ Economical, compact, simple to install and operate with minimal maintenance.
- ◆ LIFETIME WARRANTY on North Star evaporators and PERFORMANCE GUARANTEE.

# North Star

## North Star Model 60 Operating Data



**WEIGHT:** 8,100 lbs - 3,674 kg  
**VOLUME:** 510 cu ft - 14.4 cu mtr  
**DRIVE MOTOR:** 1.00 HP  
**PUMP MOTOR:** 0.50 HP  
**SUCTION LINE:** 4" Sch 40  
**LIQUID LINE:** 1 1/2" Sch 80

**OIL DRAIN LINE:** 1/2" MPT  
**WATER LINE:**  
     **Tank Inlet:** 1/2" FPT  
     **Tank Drain:** 1 1/4" FPT  
     **Pump Outlet:** 1 1/4" FPT  
     **Flow Control Valve Inlet:** 1 1/4" FPT

REFRIGERANT CAPACITY (Volume 8.68 Cubic Feet - .25 Cubic Meters)				REFRIGERATION REQUIREMENT (Tons of Refrigeration Per Ton of Ice)					
<b>Freon R-134a</b>	710 lbs (322 kg)	<b>Freon R-404a</b>	685 lbs (311 kg)	<b>Water Temperature °F</b>	40	50	60	70	80
<b>Freon R-22</b>	660 lbs (300 kg)	<b>Ammonia R-717</b>	330 lbs (150 kg)	<b>Tons of Refrigeration</b>	1.20	1.25	1.30	1.40	1.50

### ICE MAKING CAPACITY RANGE GUIDELINE

Evaporator Temperature (°F)	+5	0	-5	-10	-15	-20	-25	-30
<b>Stainless Steel Model</b>	12.0 14.0	14.2 16.6	16.5 19.2	18.8 22.0	21.1 24.8	23.2 27.4	25.2 29.8	27.0 31.5
<b>Carbon Steel Model</b>	14.0 16.6	17.4 20.2	20.6 23.9	23.9 27.5	27.0 31.3	30.2 34.7	32.7 38.0	34.1 40.0

\*Capacity based on tons (2,000 pounds) per 24 hours, 1.5 to 2.0mm ice thickness, 60°F make-up water, and oil-free ammonia refrigerant. For other operating conditions and specific capacities, refer to our capacity curves or visit the Ice Maker Selection Tool on our web site at [www.northstarice.com](http://www.northstarice.com). Capacities in *italics* are 2.0mm ice thickness.

**WATER REQUIREMENT: 0.167 GPM PER TON OF ICE PER 24 HOURS**

## THERE'S ONLY ONE NORTH STAR

North Star Ice Equipment Corporation PO Box 80227 ♦ Seattle, WA 98108 USA ♦ (206) 763-7300 ♦ 1-800-321-1381  
 Fax: (206) 763-7323 E-mail: [info@northstarice.com](mailto:info@northstarice.com) ♦ Web Site: [www.northstarice.com](http://www.northstarice.com)