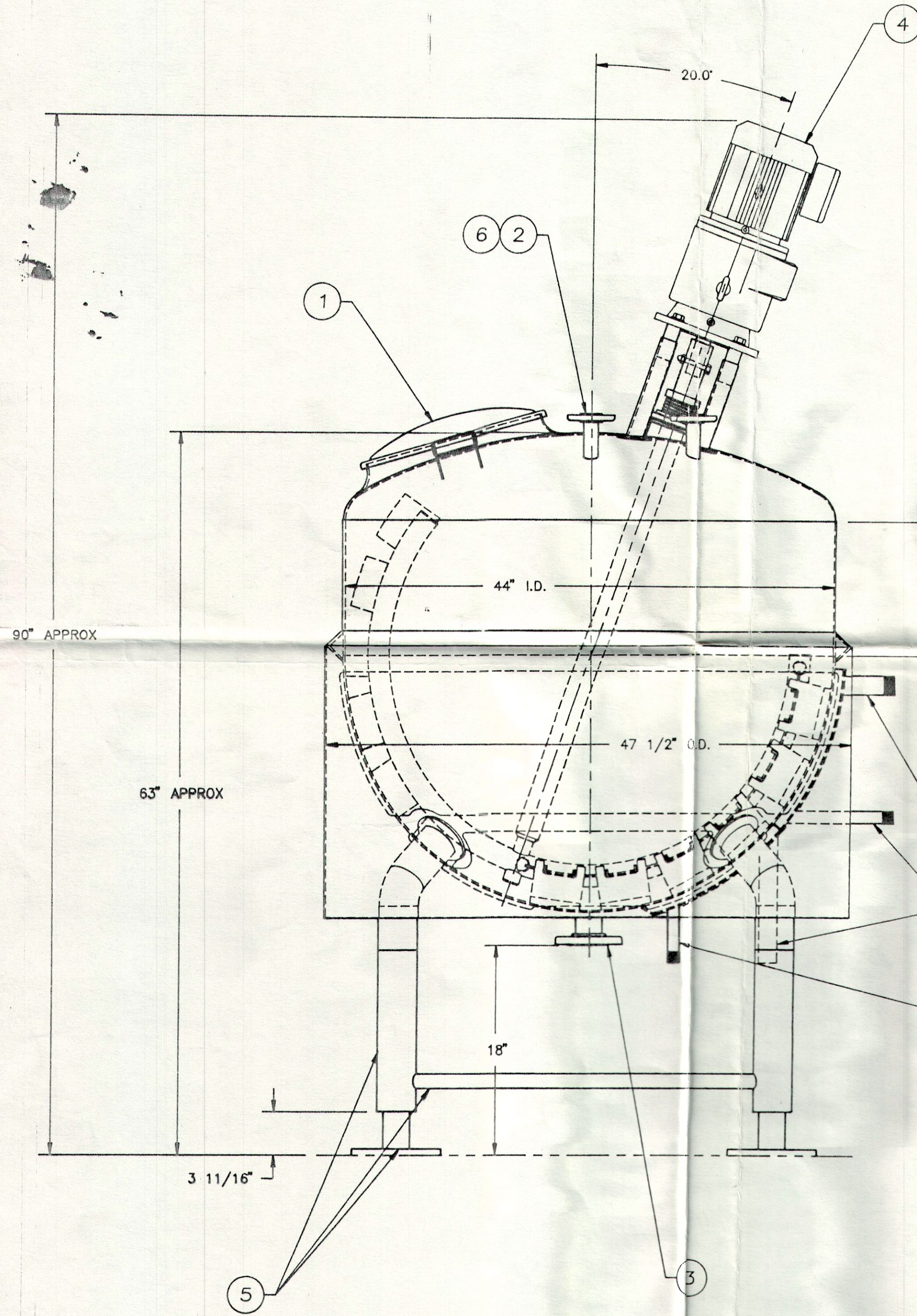


THIS DRAWING IS THE PROPERTY OF CHERRY-BURRELL. THE INFORMATION CONTAINED HEREON IS CONFIDENTIAL AND MUST NOT BE COPIED OR DISCLOSED TO OTHERS WITHOUT THE WRITTEN AUTHORIZATION OF CHERRY-BURRELL CORPORATION.

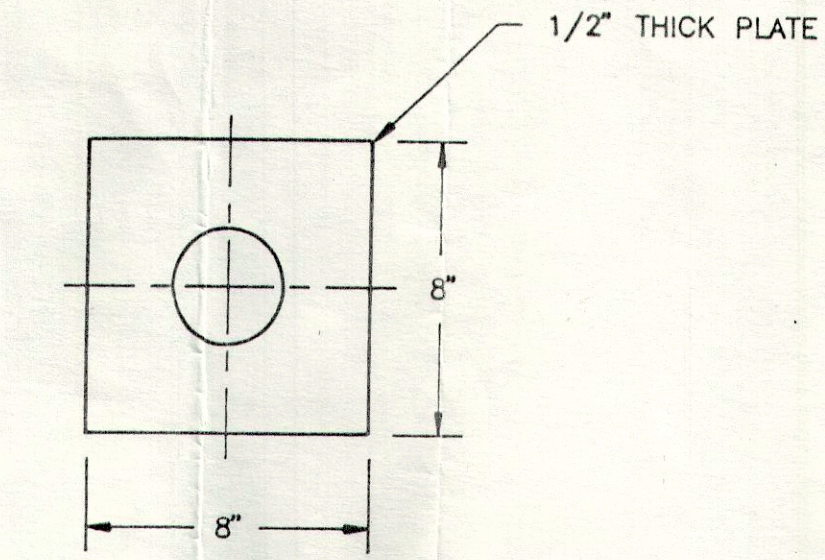
VESSEL TOLERANCES

UNLESS OTHERWISE SPECIFIED

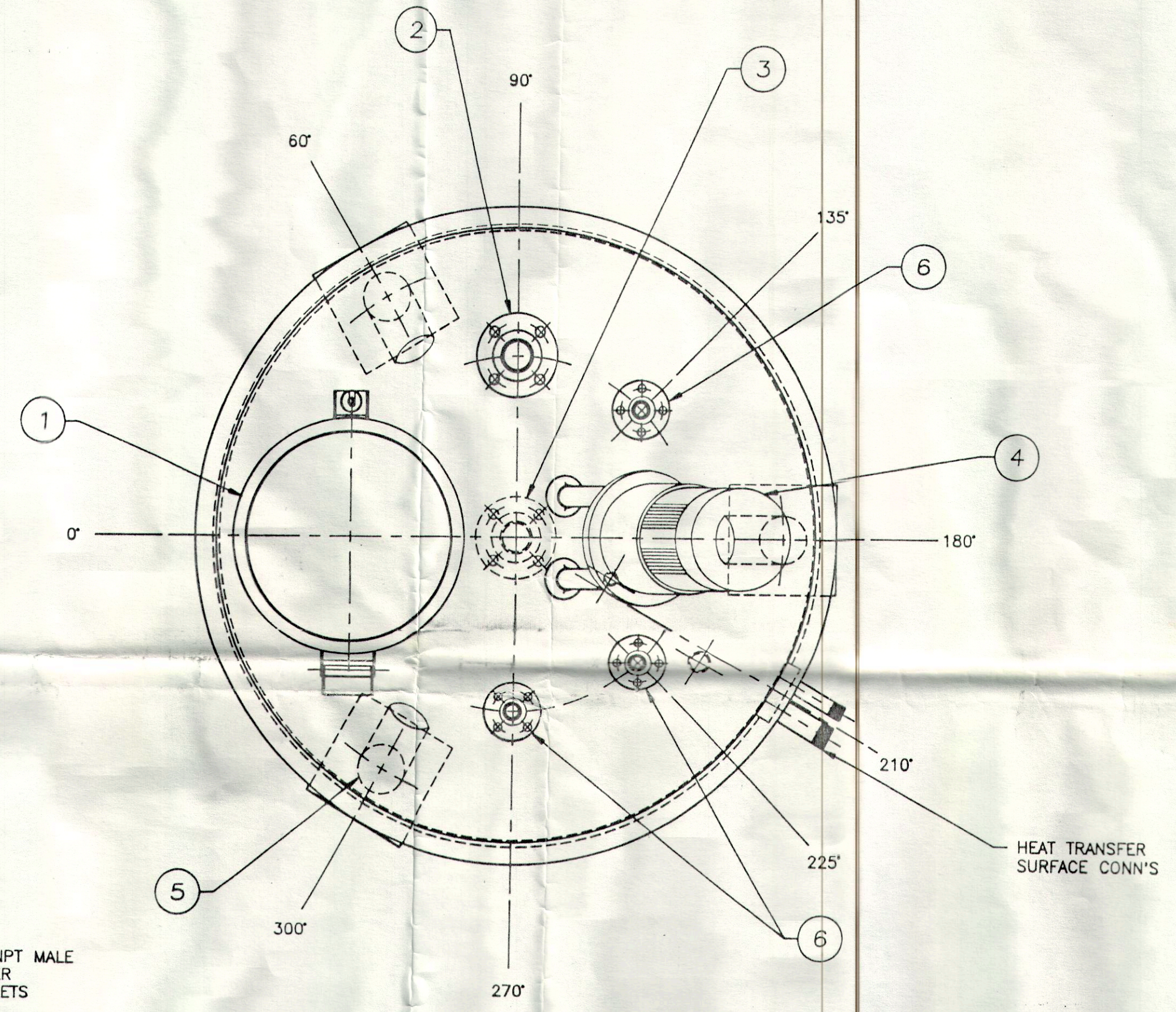
LEG STRAIGHTNESS..... +/- 1/2 DEG.
FITTING STRAIGHTNESS..... +/- 1/2 DEG.
FITTINGS LOCATION..... +/- 1/8" RADIAL
LEG CIRCLE..... +/- 1/8" RADIAL
LEG ANGLE..... +/- 1/2 DEG. ANGULAR



ELEVATION
SEE PLAN VIEW
FOR TRUE ORIENTATION



FLANGED FOOT DETAIL



PLAN VIEW

- SPECIFICATIONS FOR:** (1) 150 GALLON VERTICAL INSULATED DIMPLE JACKETED "KETTLE" FOR STEROLS (RATED CAPACITY + 4" FREEBOARD)
- DESIGN** ATMOSPHERIC OPERATION, FOR PRODUCT HEATING AND COOLING
- DIMENSIONS** 44" ID x 12" STRAIGHT SIDE x APPROX. 63" OVERALL HEIGHT TO THE TOP OF THE KETTLE
- LINING** MATERIAL TYPE 304 SS, #4 FINISH INSIDE AND OUTSIDE
LINING SHELL - 7 GA., WITH 1/2" DIA. BAR BRIM
HEMISPHERIC BOTTOM HEAD - 7 GA.
PRODUCT CONTACT SURFACES (T304 SS), UNLESS OTHERWISE SPECIFIED
- FINISH** INTERNAL WELDS GROUND AND POLISHED - 150 GRIT MIN.
EXTERNAL WELDS GROUND AND POLISHED - 150 GRIT MIN. EXCEPT AS NOTED
#2B FIN. ON BOTTOM TRIM, SCOTCH BRITE FIN. ON LEG BRACING & MOTOR SUPPORTS
- TOP HEAD** SINGLE SHELL ASME DISHED TOP HEAD - 10 GA. #4 FINISH
- HEAT TRANSFER SURFACE** 18 SQ. FT. OF DIMPLE SURFACE ON THE HEMI-HEAD WITH 1-1/4" NPT MALE SUCTION OUTLETS AND 3/4" NPT MALE HEAT TRANSFER LIQUID INLETS FOR FREON (LESS CONTROLS)
(2) ZONES
NOTES: - MAX. ALLOWABLE WORKING PRESSURE: 170 PSI @ 200 DEG. F
- HYDROSTATIC TEST PRESSURE: 270 PSI
- ASME** ASME "U" CERTIFICATION ON THE HEAT TRANSFER SURFACE ONLY
- INSULATION** 1" HIGH DENSITY MINERAL WOOL ON THE SIDE, FIBERGLASS INSULATION ON THE BOTTOM.
- OUTER TRIM** SIDEWALL - 14 GA., T304 SS, #4 FINISH
FLAT BOTTOM - 14 GA., T304 SS, #2B FINISH

ITEM	QTY	DESCRIPTION
1	1	MANHOLE: 16" DIA. IN THE TOP HEAD WITH COVER, GASKET, AND HOLDDOWN
2	1	INLET: 2" 150# FLANGE IN TOP HEAD
3	1	OUTLET: 2" 150# FLANGE (LESS VALVE) 18" OUTLET HEIGHT FROM THE FLOOR TO THE BOTTOM OF THE FLANGE
4	1	INCLINED SCRAPER AGITATOR - STYLE 'SM' SCRAPER AGITATOR WITH WHITE BLADES ON THE HEMI-HEAD 1-1/2 HP SINGLE SPEED MODEL RF73 EURODRIVE, OPER. @ 20 RPM 230/460/60/3 - (LESS SWITCH) SPRING LOADED SEAL NOTE: - AGITATOR DESIGNED FOR PRODUCTS WITH A MAX. VISCOSITY OF 3500 CPS @ 1.1 SPECIFIC GRAVITY
5	3	LEGS: WITH ADJUSTABLE FLANGE FEET - T304 SS, (NO EXPOSED THREADS) W/ HORIZONTAL LEG BRACING
6	3	INLETS: 1" 150# LAP JOINT FLANGES WITH STUB ENDS IN TOP HEAD

APPROVED FOR A.S.M.E. FABRICATION

Ed. 1992 ADDN. A93 APPROVED 5/17/94 DATE 6/17/94

ASME 'U' CERTIFICATION

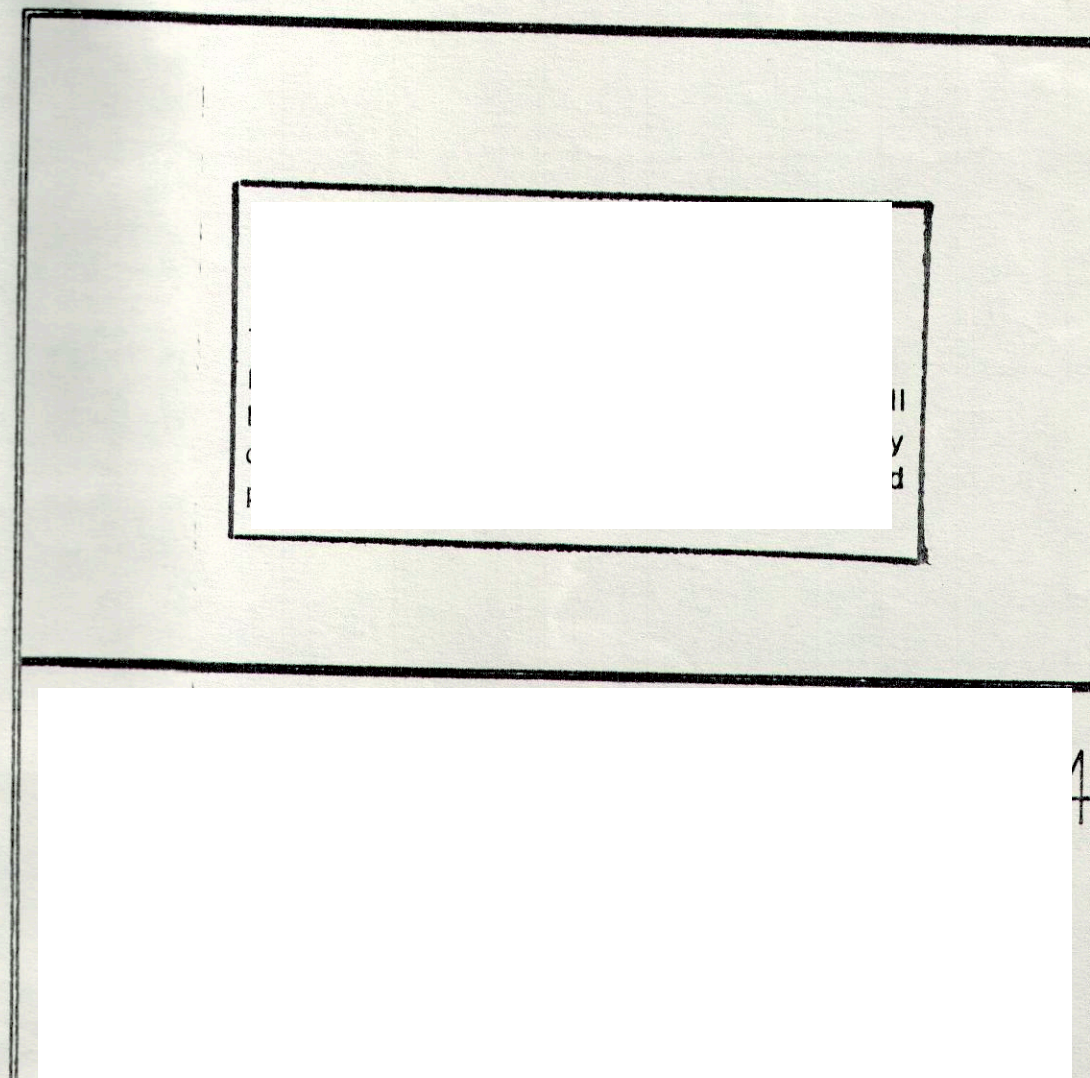
VESSEL AND/OR HEAT TRANSFER SURFACE DESIGNED PER THE ASME BOILER & PRESSURE VESSEL Code, Section VIII Div.1 1992 edition, A92 Addenda VESSEL REGISTERED WITH NATIONAL BOARD

RADIOGRAPHY USED IN DESIGN OF THIS VESSEL IS XXXXXXXX CORROSION ALLOWANCE FOR THIS VESSEL IS XXXXX PER PARA. UG-22, EXTERNAL LOADINGS HAVE BEEN CONSIDERED. UNLESS OTHERWISE NOTED, NOZZLES HAVE NOT BEEN DESIGNED FOR ANY APPLIED LOAD. IMPACT TESTS ARE NOT REQUIRED - STAINLESS STEEL UHA-51 (a).

<<<< HEAT TRANSFER SURFACE >>>>
HEAT TRANSFER SURFACE IS CHERRY-BURRELL DESIGNED. MAXIMUM ALLOWABLE PRESSURES AND TEMPERATURES HAVE BEEN ESTABLISHED BY PROOF TEST, PER UG 101 (m).

MAX. ALLOWABLE WORKING PRESSURE: 170psi @ 200deg. F.
HYDROSTATIC TEST PRESSURE: 270psi

APPROXIMATE VESSEL WEIGHT, EMPTY: 1300 LBS



NOTE: CAD DRAWING DO NOT CHANGE MANUALLY

NO.	ALTERATION	DATE	CHG. BY	APPR. BY	SCALE: 1-1/2"=12"
A	WAS 100 GAL X 36", ADDED ITEM 6 PER CUST REQUEST	6/10/94	FSK		

BY DATE
DR: RGF/04/19/94

CHERRY-BURRELL
A United Dominion Company
Process Equipment Division
576 E. MILL STREET
P.O. BOX 1000
LITTLE FALLS, NY 13360-1000

PLOT #2

FINAL ASSEMBLY
150 gal. x 44" I.D.
INSULATED KETTLE DM

200591 - CUSTOMER APPROVAL SIGNATURE