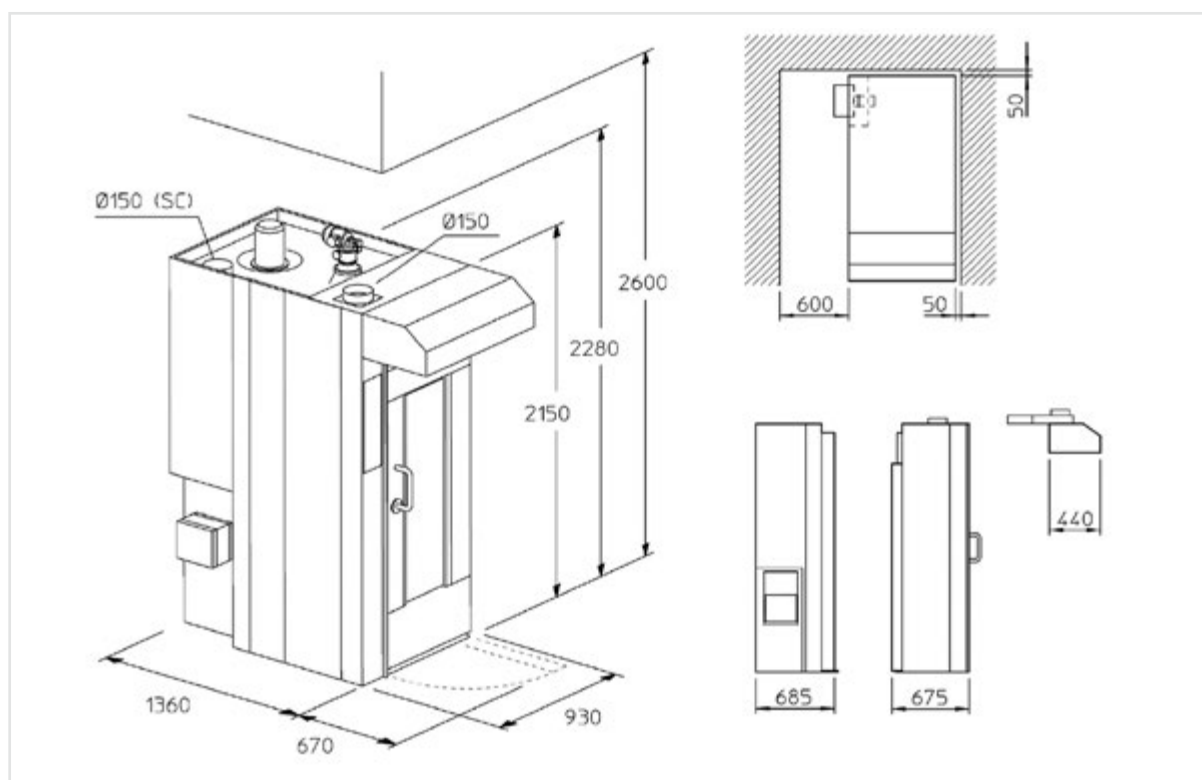


POCKET 4060



- Extremely compact size
- Outside panels in st/st
- Oven shipped in 2 preassembled elements (installation in few hours) or completely assembled (as option)
- Automatic steam exhaust system
- Automatic start
- Hood with exhaust fan
- Double glass door
- Heat generator with armored electric elements (SE)
- Standard rotation device with hook (for racks up to 100 kg full load)
- Electric board with extended cables to hang it on oven's sides
- Possibility of air steam condenser, integrated in the hood (optional - installation without discharge chimneys in SE version)
- Possibility of burner / electric elements on the right side (optional)
- steam generator with cascade elements with spheres + liter-counter (optional)

POWER INLET	400/3N~/50
FUMES DISCHARGE	Diam 150 mm
STEAM EXHAUST	Diam 150 mm



	Pan capacity		Pan size	Minimum door width	Weight	SC Version		SE Version
	n°	passo	mm	mm	kg	kW	kcal/h	kW
POCKET 4060	15÷18	97÷81	400x600	730	800	1,0	25.000	20,7
POCKET 4060 + vaporiera	15÷18	97÷81	400x600	730	800	1,0	27.000	27,6

SE electric **SC** with burner