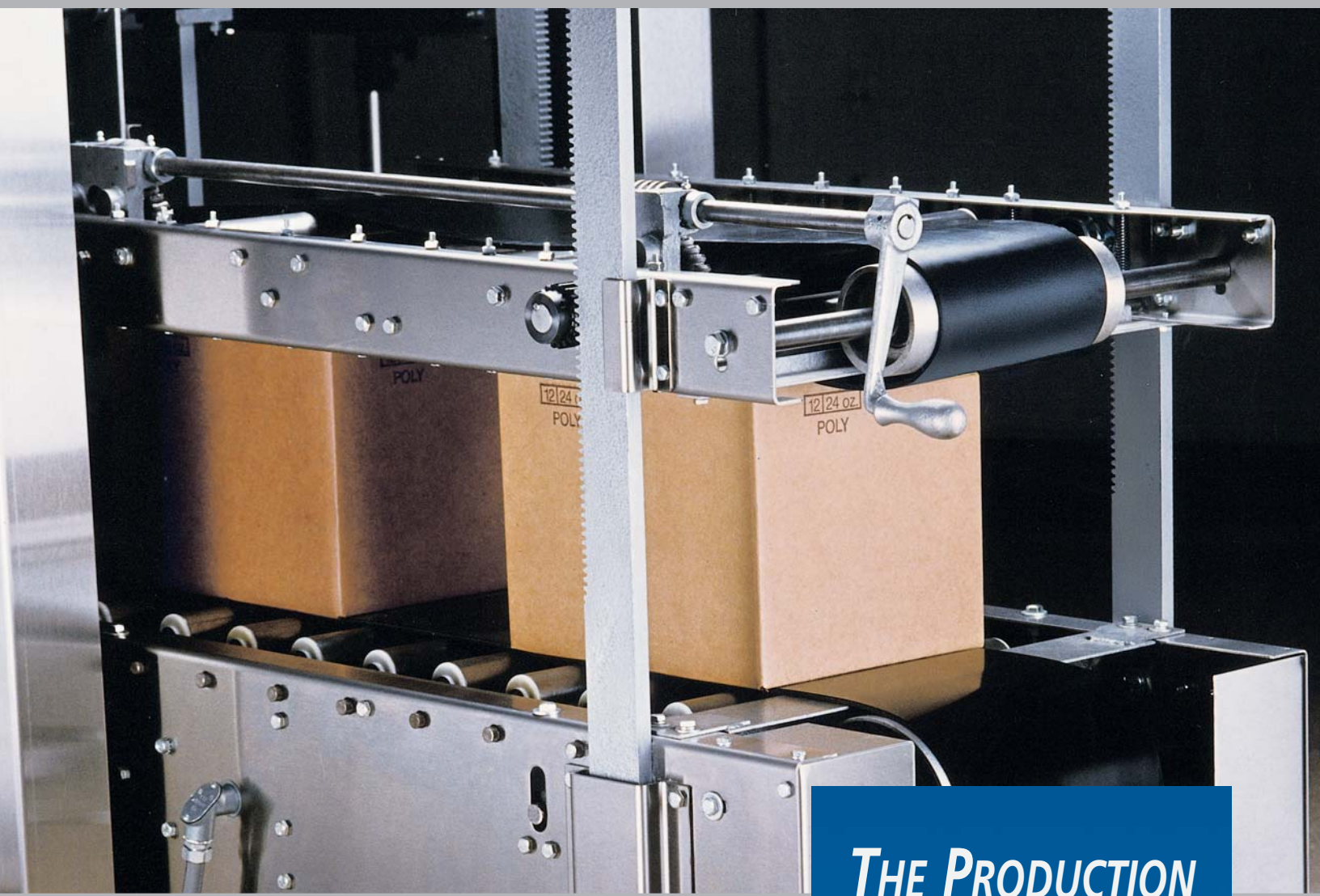


SUPER PRO 30HM

ADHESIVE SEALING TOP & BOTTOM CASE SEALER



THE PRODUCTION *CASE SEALER*

FOR HOT MELT
ADHESIVE SEALING



**A-B-C PACKAGING
MACHINE CORPORATION**

The Super Pro 30 A New Industry Standard!

Simple in design, reliable in operation ... that's how we build case sealers. And, over the years, our commitment to quality has made A-B-C case sealers the standard for industry comparison.

Now we're setting new standards. Today's Super Pro 30 hot melt sealer is the best ever ... with a new, sleek design and high productivity features to handle your real-world production demands today and in the future.

Take a look at the new Super Pro 30 Hot Melt Sealer from A-B-C. You'll see how A-B-C innovation, quality and craftsmanship are making this hot melt case sealer the new industry standard.



BUILT FOR PRODUCTION

The Super Pro's stainless steel frame is welded and bolted, and the upper operating mechanisms are secured to the frame by a solid rack and gear system. Drive shafts are solid 1-1/4" steel. The flight lugs are forged of cast aluminum for strength, mounted on wear-resistant 1-1/2" pitch flight chain. A-B-C flight lug drive has been proven in thousands of field installations as an extremely reliable, durable method of case transfer.

The compression section is an independent unit, with a dual belt case transfer that is powered by a 1 hp motor to assure proper case transfer. The top belt is backed by spring loaded rollers which adjust to varying case heights for a uniform seal.

With a total machine weight of over 2,200 pounds (not including compression) the Super Pro 30 is built to handle the toughest production situations.

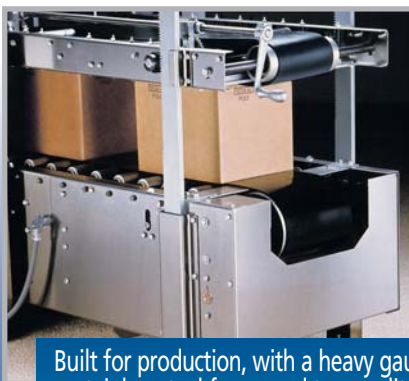
New styling is functional and attractive, featuring a heavy duty stainless steel reinforced frame and high visibility gull-wing style access doors.

FEATURES FOR SQUARE CASES

A-B-C's exclusive flight lugs push each case at the corners, holding the case square during transfer. The cast aluminum flap folders are gradually contoured to fold the flaps at the score line then close them smoothly with no flap overlap. Even cases with poor, undefined scores are folded squarely and securely.

ATTRACTIVE, FUNCTIONAL DESIGN

The Super Pro's sleek stainless steel frame won't rust and never needs painting. The clear, gull-wing doors are a standard feature, not special order. They are electrically interlocked to stop the sealer when opened, and allow total access to the machine.



Built for production, with a heavy gauge stainless steel frame and top quality components.



Chain-mounted flight lugs square each case during transfer.



From infeed to exit, this sealer is completely automatic and needs no operator.

EASY CHANGEOVER

The Super Pro 30 offers a quick two-step case size changeover. First, simply position a new case at the infeed and use the hand-cranked to adjust for the new case height and width. Adjustments may be made from either side of the sealer. Next, set the new adhesive pattern at the electronic adhesive timer. In only minutes, your case sealer is set for your new case size and back in production.

LOW MAINTENANCE

The rugged construction of the Super Pro 30 HM is your guarantee that it will run longer with less wear or care. Plus, we've added features to minimize your maintenance tasks.

The main drive gear assembly is enclosed in a lubricating oil bath to eliminate gear wear. Sealed bearings and self-lubricated air cylinders never need maintenance. The automatic water eliminator prevents air valve damage caused by water in air lines.

When routine maintenance or cleaning is necessary, the gull-wing doors swing out of the way to allow complete machine access.

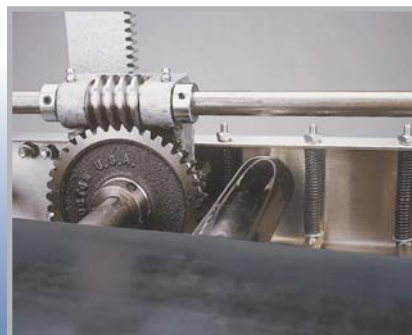
MOTOR-DRIVEN, SPRING-LOADED COMPRESSION SECTION

Proper compression is the key to well-sealed cases that stay sealed and secure through palletizing, shipping and distribution. The Super Pro 30 offers a superior compression section designed for consistent sealing.

Both the top and bottom compression belts move with the case during sealing, eliminating case drag that can occur in static compression sections. The bottom compression belt is motor-driven and backed by steel transfer rollers. The top belt is supported by full width spring-loaded rollers that accommodate case height variations and ensure proper sealing.



Gull wing style doors open easily to provide complete machine access.



Spring-loaded compression rollers compensate for varying case heights and ensure a secure seal.



Gears are enclosed in a lubricating oil bath to eliminate wear from friction and increase machine life.

Standard features of the Model 30 adhesive sealer include:

- Automatic case feed
- Automatic minor flap closing
- Heavy-duty flight lug drive
- Cast aluminum flap folders
- Top quality hot or cold adhesive applicators
- Adhesive pattern timer
- Independent motorized compression unit
- Spring-loaded top compression rollers
- Gull-wing style high visibility doors
- Rapid-adjust cranks for case change
- Maintenance-free sealed bearings
- Main gear drive in sealed oil bath
- Self-lubricating air cylinders
- Automatic water eliminator
- Low voltage control circuit transformer
- Convenient power on-off button

SPECIFICATIONS:

- Electrical specifications:
Primary 220, 440V, 60hz, 3ph
- Air Requirements
.06 cu.ft. per case at 60 psi

OPERATION

Each case is automatically indexed from your conveyor to the motor-driven flight lugs. The top and bottom inner flaps are closed and adhesive is applied. The outer flaps are gently closed by contoured cast aluminum flap folders as the case is indexed into the compression section. As the case exits the compression section, it is squarely sealed and ready for palletizing.

Made in America

Over ninety percent of the machine components in A-B-C machines are crafted in our own manufacturing plant. It is our tradition of quality and craftsmanship that has made A-B-C a leader in packaging machinery manufacture since 1940.

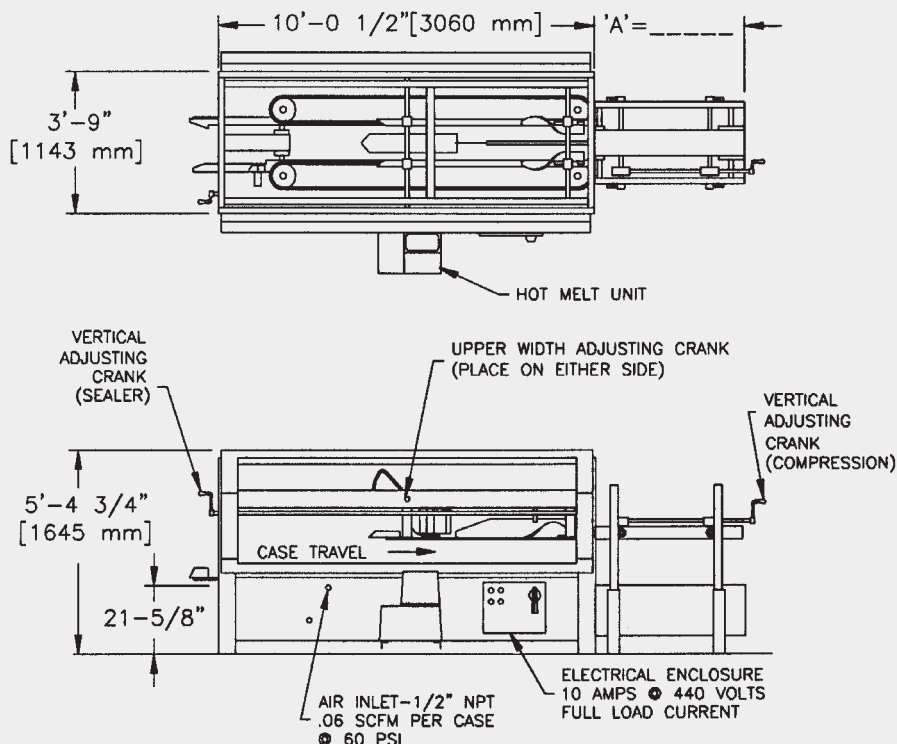


Litho in U.S.A.

Guards may be opened or removed for photos shown

C-130

SPECIFICATIONS:



CASE RANGE

	L	W	H
MINIMUM	8"	6"	4-1/2"
MAXIMUM	24"	16"	18"

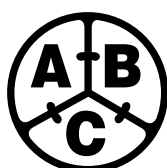
A = COMPRESSION LENGTH

Standard lengths - 4', 6', 8', 10', 12', 14, 16'
Other lengths are available, consult factory.

The Complete Line of A-B-C Equipment includes:

- Case Erector / Bottom Sealers
- Case Sealers
- Pad Inserters
- Partition Inserters
- Case Slitter / Sealers
- Traymakers
- Decaser/ Single Filers
- Case Packers for cartons or bottles
- Tray Packers for cartons or bottles
- Bulk Depalletizers
- Carrier Openers
- Carrier Inserters
- Palletizers for cases or bottles
- Palletizers for bags

All information in this brochure was current at time of printing, however, in the continuing effort to improve the quality and construction of A-B-C machines, we reserve the right to make changes without notice. Guards may be opened or removed for photos shown.



A-B-C PACKAGING MACHINE CORPORATION

811 Live Oak Street, Tarpon Springs, FL 34689-4199 USA • Phone 727-937-5144 • Fax 727-938-1239
Visit our web site www.abcpackaging.com