



EoL

 END OF
LINE

TEKKRA 200 SERIES Side Infeed Multi-Packer



Versatile, modular design easily configures for custom applications

Texwrap's next generation Tekkra 200 Series configures with the flexibility of numerous standard and custom infeed and collation options, producing bullseye-multipack configurations for a variety of industries and applications.

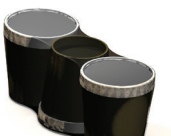
The intermittent motion Tekkra 200 contains and assists product through the entire shrink wrap process, so it is perfect for taking unsupported product (not in a tray or on a pad) and turning it into a multipack. Plus, the Tekkra 200's unique tunnel discharge cooling station, quickly cools film to preserve product integrity.

The Tekkra 200's multi-pack bundles are ideal for product distribution throughout the entire supply chain.

FEATURES AND BENEFITS

- Modular design offers opportunity to customize for maximum productivity and plant layout - and still with a six week reduction in manufacturing build time
- Multi-pack bundles eliminate the need for cartons, trays or cases, reducing packaging and freight costs
- Ergonomic/quick change powered film cradles
- Servo driven main ram for product control and simplified change-overs provides maximum flexibility in bundling a range of SKUs.
- Maintenance accessibility throughout
- Allen Bradley PLC/HMI interface assures user friendly, reliable operation
- Servo driven seal assembly delivers fast and repeatable seals - 15-20 multi-packs per minute
- Compact/heavy duty frame design

APPLICATION EXAMPLES



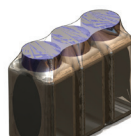
DAIRY / ICE CREAM



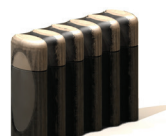
BEVERAGE / JUICE



PHARMACEUTICAL



INDUSTRIAL



PERSONAL



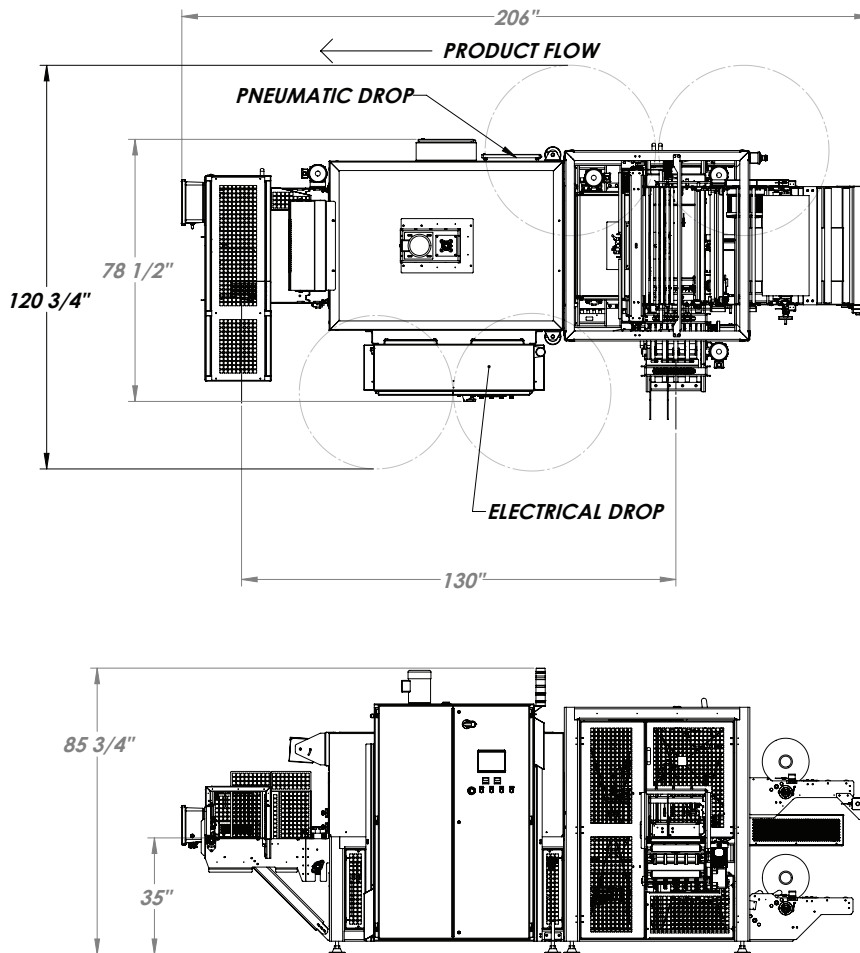
TYPICAL PRODUCT SPECIFICATIONS

Footprint	25'-10" x 8'-10" Machine dimensions are based on product size and speed requirements.
Speed	Up to 25 bundles per minute (pack pattern, case size, and accumulation dependent)
Product Type	Bottles, Cans, Cartons, Tubs, Pails, Other items to be multi-packed or bundled with collation solutions
Closure Style	Bull's Eye, Side Tack, or Side Seal and Trim

Display	7" color touchscreen
Frame	Heavy-duty welded tubular steel
Electrical Requirements	NEMA 12
Air Requirements	80 PSI @ 16 cfm

PRODUCT OPERATION / DIMENSIONS

Dimensions will vary based on infeed and discharge specifications



OPTIONS

- Stainless steel construction for washdown environments
- Product specific collation systems such as lane dividers, stackers, feed screws and pick-and-place systems
- Multi-lane version for increased production rates
- Film splicing station

ADDITIONAL DAIRY / ICE CREAM EXAMPLES

