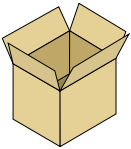




Fully Automatic Omni-Handed Case Former
Up to 10 cases per minute



The WF10 erects RSC and HSC cases.



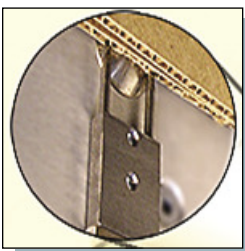
Fully Automatic Omni-Handed Case Former

The WF10 showcases a revolutionary omni-handed feature which allows case packers to form right-handed and left-handed cases on the same machine without the need for specifically handed equipment. The WF10 Omni-Handed Case Former is ideal for customers with multiple product sizes, allowing them to pack products in batches of left-oriented or right-oriented cases with a quick changeover in between. The WF10's positive case squaring, delivers square cases in a fully upright position, ready for packing.



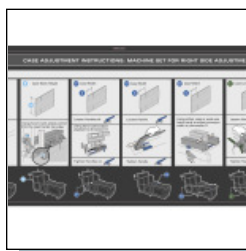
Omni-Handing

Minimize changeovers and downtime when switching cases with the easily adjusted omni-handed case opening mechanism. The ability to open left-oriented or right-oriented cases on the same machine is exclusive to Wexxar/BEL formers.



Pin & Dome System

Vacuum free case opening is accomplished using the Pin & Dome technology. Each case is mechanically captured and positively squared with precision and reliability unmatched by any other system.



Easy Set-up Guides

A color-coded tactile guide and easy tools-free adjustments, provide for convenient setup and quick changeover in minutes.

WF10 Case Former

WF10 Fully Automatic Omni-Handed Case Former

WF10 Features

- Efficient, in-line design.
- User-friendly touch screen to control and monitor operation.
- Tool-less, color-coded case size changeover in under 10 minutes.
- Case Call Button allows the operator to call a case or pause production when the discharge conveyor is full.
- No vacuum: equipped with WEXXAR's latest generation of patented Pin & Dome case opening technology.
- Gravity case feed magazine with positive case separation.
- All moving parts and case-squaring action is contained within the machine frame.
- Interlocked safety guarding stops the machine when door is open for safe and easy access during service.
- Easy to maintain: using the highest quality commercially available components and backed by WEXXAR's warranty and experienced, nationwide service team.
- Standard DEKKA 22 Stainless Steel 2" tape heads and optional DEKKA 3" tape heads are available.

Complete Solution



BEL 252 Case Sealer

The BEL 252 case sealers are fully automatic and accept uniform case sizes for top and bottom case sealing by adjusting the width, height and Snap Folder.



BEL 250 Case Sealer

This fully automatic uniform case taper is equipped with DEKKA high performance stainless steel tape heads and seals a wide range of case sizes. The width and height adjust simultaneously.



Accumulation Tables

A range of accumulation styles and sizes are available for presenting products precisely to the operator.

WF10 Specifications

Case Size Range	Length	Width	Height
Minimum	9" 228 mm	7" 178 mm	5" 127 mm
Maximum	20" 508 mm	15" 381 mm	15" 381 mm
Machine Speed: Up to 10 cases per minute. Oversize option available.			

Specifications are subject to change without notice.

How the WF10 Works



The WF10 erects right & left oriented RSC and HSC cases.



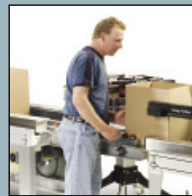
1 Continuous or Case Call Setting

The operator can either set the WF10 to form and deliver cases continuously to the packer or set the case call feature, which allows the packer to advance cases as needed with the push of a button.



2 Bottom Seal & Load Box

The WF10 bottom seals and delivers the case to the packer. It holds right- and left-oriented cases in place for efficient "hands-free" loading.



3 Push Loaded Box Out

When fully loaded, the operator easily pushes the case into the case sealer for taping.



powered by Pro Mach 

shorr | packaging corp.

shorr.com 888.885.0055

Backed by Wexxar's warranty and experienced, nationwide service team.