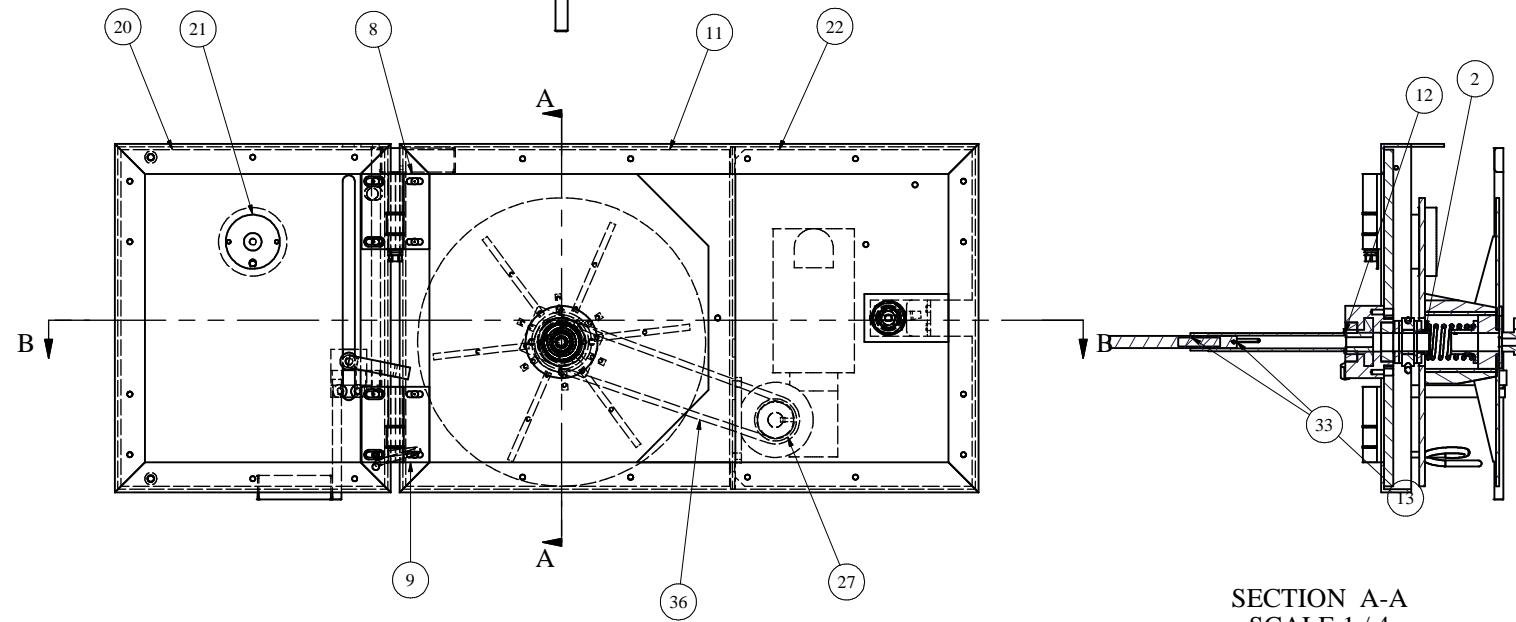
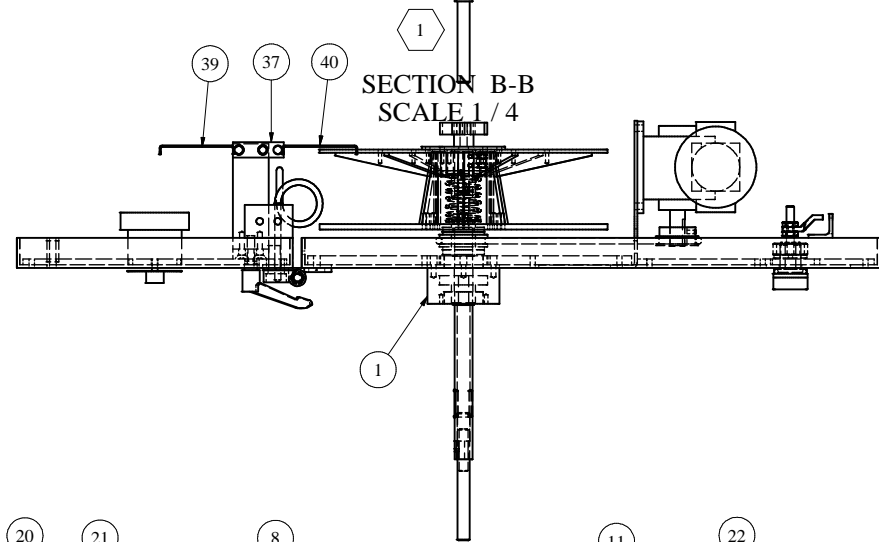
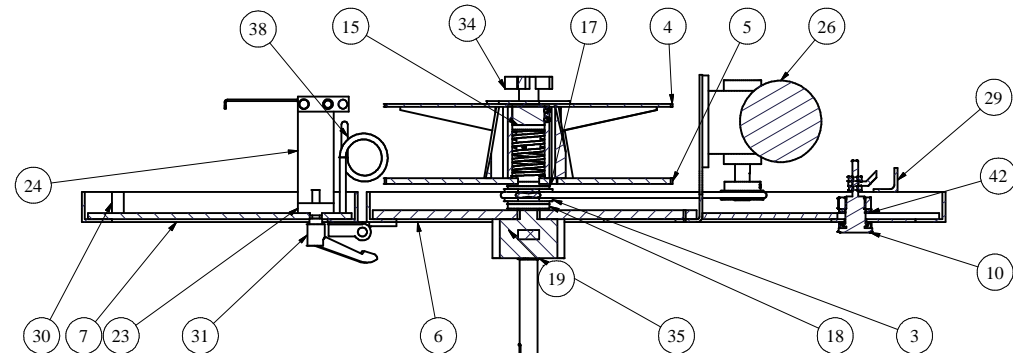


REVISION HISTORY			
REV	DESCRIPTION	DATE	APRD
1	CHANGED M0029245 WELDMENT TO REFLECT CHANGE TO M0028896, REMOVED "DOUBLE D" FOR EASE OF MANUFACTURING. ADDED P0006096, ECO 0134.	9/30/2004	BCB



ITEM	QTY	PART NUMBER	DESCRIPTION
38	1	P0005751	SPRING 2" L X 1.4 OD
42	1	P0006096	SOUTHCO SPUR WASHER 90-6-875
41	1	P0001208	PIN SPRING 1/8 X 1
40	1	M0031622	TAIL TROUGH LONG WELDMENT
39	1	M0031621	TAIL TROUGH SHORT WELDMENT
38	1	R9563BA	TRIM GUIDE EYE
37	1	M0030388	TRIM FINGER OFFSET
36	1	M0029252	DRIVE BELT
35	1	P0000055	SPRING RETAINING RING
34	1	P0005848	QUICK ACTING KNOB 3/8-18
33	1	M0030126	STUD SHAFT
31	1	P0004262	ADJ. HANDLE 5/16-18 X 1.18
30	2	R10755AA	POT MOUNT SPACER
29	1	M0028891	DOOR LATCH STOP
27	1	M0029125	DRIVE PULLEY
26	1	P0005433	BODINE MOTOR
24	1	M0030127	TAIL TRACKING MOUNT BLOCK
23	1	M0029885	TAIL TRACKING ADJUSTOR BLOCK
22	1	M0028890	SWING LEXAN PANEL W/ LATCH HOLE
21	1	P0005443	DC MOTOR CONTROL
20	1	M0029663	FIXED LEXAN PANEL
19	1	P0005741	KNURLED KNOB 1/2-13 THRU
18	1	M0029501	SPACER BEARING TO THRUST WASHER
17	2	P0005736	THRUST WASHER 1 3/4 OD 3/4 ID 1/8 THICK
15	1	M0029244	SPRING AND PIN RETAINER
13	1	M0029242	TRIM TENSION ADJUSTMENT SHAFT
12	1	M0029243	TRIM DRIVE TUBE WELDMENT
11	1	M0028889	SWINGING LEXAN
10	1	P0001273	DOOR LATCH STOP
9	1	P0004990	HINGE SI-HG80 SERIES BLANK
8	1	P0005191	BANNER HINGE SWITCH SI-HG80DQDR REAR
7	1	M0029241	FIXED GUARD FRAME WELDMENT
6	1	M0029245	SWINGING GUARD FRAME WELDMENT
5	1	M0029238	NONREMOVABLE SPOOL ASSEMBLY
4	1	M0029235	REMOVABLE SPOOL ASSY
3	1	M0029123	DRIVEN PULLEY ASSEMBLY
2	1	M0029232	SPRING RETAINER FOR BEARING
1	1	M0029248	BEARING BLOCK ASSY

This drawing and all information herein is the property of Rencco, Inc. and is confidential and must not be made public or reproduced by any means unless authorized by Rencco, Inc. and is subject to return upon demand.

RENCCO
PACKAGING MACHINES AND SYSTEMS
23721 M60 W. - HOMER, MI 49245
PHONE: (517)568-4121 FAX: (517)568-4799 - WWW.RENCCO.COM

NOTED ABOVE
 MATERIAL: NONE
 FINISH: NONE
 UNLESS OTHERWISE SPECIFIED TOLERANCES:
 ANGULAR ±1°
 LINEAR X=±.10, XX=±.01, XXX=±.005
 FRACTIONAL TOLERANCES:
 LOCATION ±.132"
 HOLE DIA +.164", 0"
 BREAK ALL CORNERS R1.32"
 SHEET METAL: BEND RADIUS 1/32"

ENG BY: LKL
 DESIGNED BY: LKL
 DRAWN BY: LKL
 CHECKED BY: LKL
 W/D NO: 5305
 DATE DRAWN: 5/21/2004
 DATE APRV: 5/21/2004

SCALE: 1:2
 QTY REQD: 1
 DRAWING NUMBER: M0029247
 SHEET: 1